

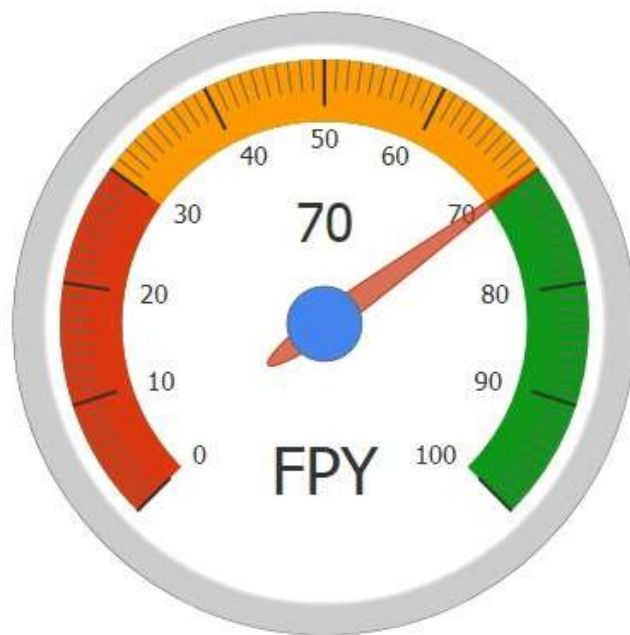
ALPEIN Software SWISS AG

Google Style Gauge for SAP Lumira Designer

(Design Studio)

Specification

Last Revision: Aug 22, 2018



Document version 1.3

22.08.2018

Overview

A gauge component displays a single key measure (amount, percentage) and based on Google style gauge chart.

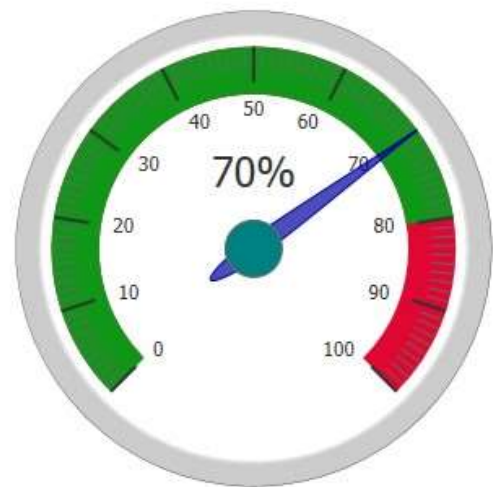
Gauge benefits:

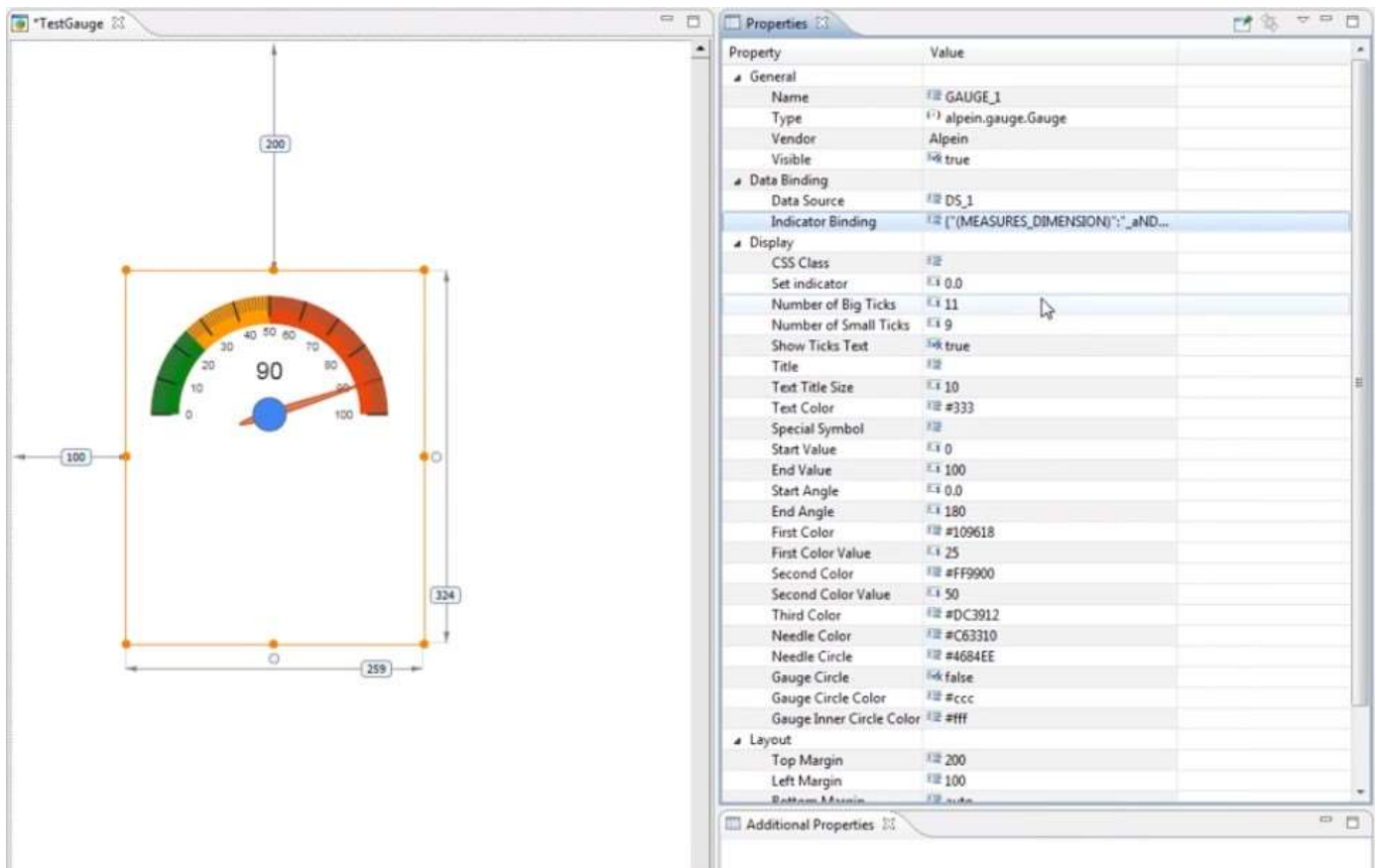
- Responsive Design
- Options for customizing in properties tab and methods
- Smooth Animation
- Data Binding

Compatibility

- Design Studio 1.5+
- Lumira Designer 2.x
- Browsers – Chrome, IE, Opera, Mozilla

Component Design Variation





Component Methods

Name	Type	Description
setStart (float value)	void	Sets min gauge value
setEnd (float value)	void	Sets max gauge value
setStartAngle (float value)	void	Sets starting angle
setEndAngle (float value)	void	Sets second angle
setNeedle (float value)	void	Sets needle by indicator value
setSmallTicks (int value)	void	Sets number of small ticks
setBigTicks (int value)	void	Sets number of big ticks
getNeedle	float	Returns indicator value

Component Properties

Name	Type	Description
Indicator Binding	ResultCell	Indicator value in Data Source
Set indicator	float	Value for indicator
Number of Big Ticks	int	Big ticks in gauge
Number of Small Ticks	int	Small ticks in gauge
Show Ticks Text	boolean	Numbers below ticks
Title	String	Bottom text in gauge
Title Text Size	int	
Text Color	Color	
Special Symbol	String	For example: \$, %
Start Value	int	Min gauge value
End Value	int	Max gauge value
Start Angle	float	Starting angle: 0, -45, 90, etc.
End Angle	float	Second angle: 180, 225, 270 etc.
First Color	Color	Color for first range in gauge
First Color Value	int	End value for first range
Second Color	Color	Color for second range in gauge
Second Color Value	int	End value for second range
Third Color	Color	Color for third range in gauge
Gauge Circle	boolean	Show/hide outer circle in gauge
Gauge Circle Color	Color	Color for outer circle in gauge
Needle Color	Color	
Needle Circle	Color	
Gauge Inner Circle Color	Color	