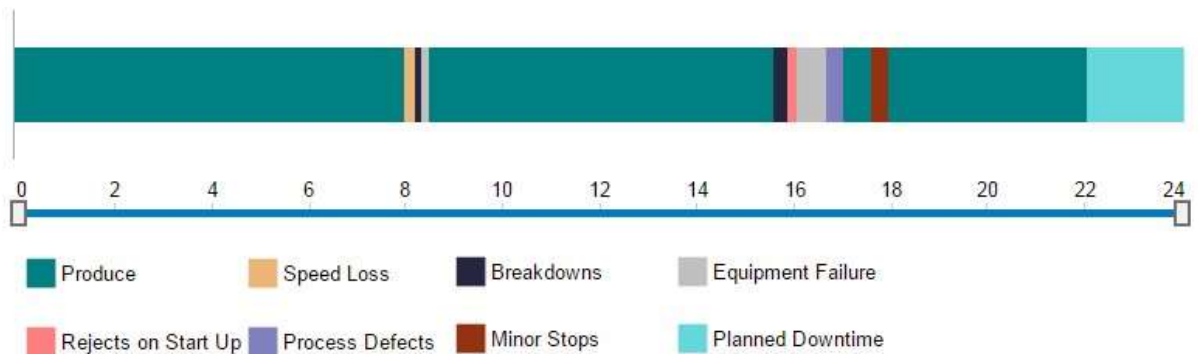


# ALPEIN Software SWISS AG

## TimeBar Chart for SAP Lumira Designer (Design Studio)

### Specification

Last Revision: November 14, 2017



## Overview

TimeBar Chart consists of three components:

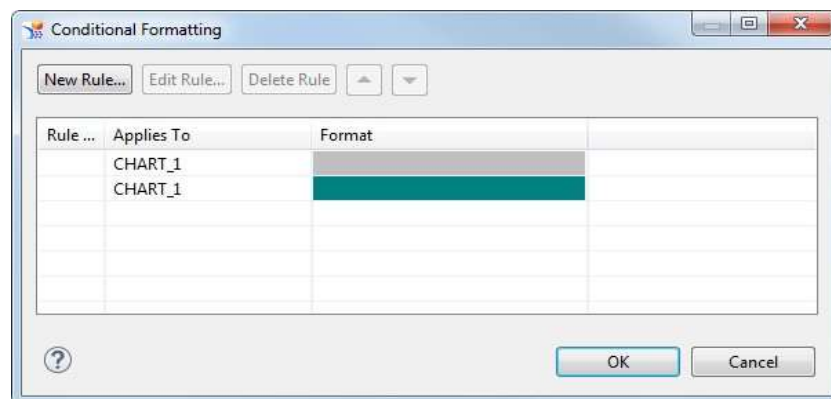
- Stacked bar chart
- Custom legend
- Range slider

## Compatibility

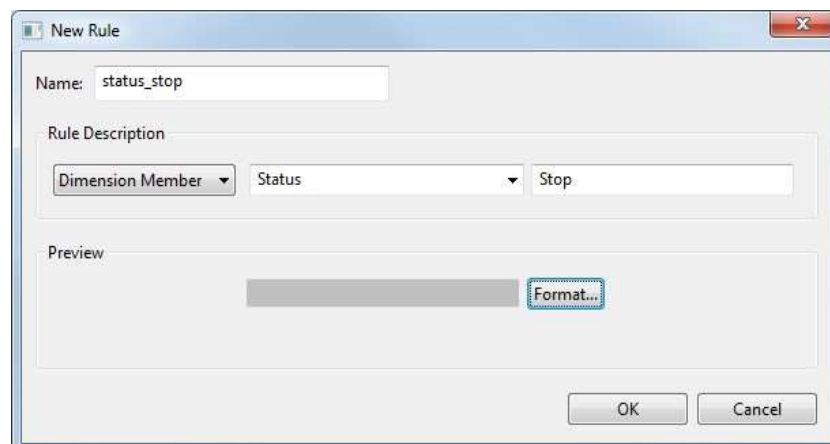
- SAP Design Studio 1.5+
- Browsers – Chrome, IE, Opera, Mozilla

## Stacked bar chart

TimeBar chart consists of Lumira Designer (former Design Studio) chart component with type Stacked Bar. Status painting is available with conditional formatting option in properties tab. Conditional formatting sets rules for finding all occurrences of status field in chart and paints them with specified color.



Conditional Formatting screen for stacked bar chart



New Rule creation for stacked bar chart

All standard properties of Bar Stacked chart work with Time Bar Chart application except for legend property.

## Custom legend

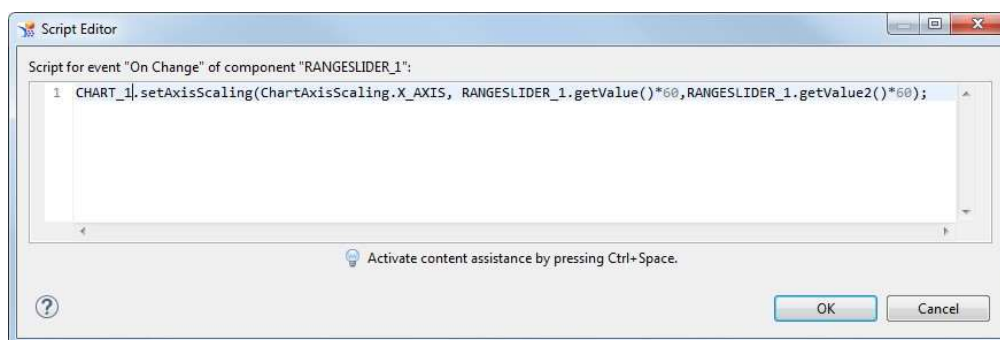
Time bar legend is custom extension for Time Bar Chart application. Its purpose is to display chart elements and their colors in legend panel. User must manually specify text and color for each element in properties tab because conditional formatting disables legend to display data information properly.

## Range slider

Range slider is custom extension for Time Bar Chart application. The main event onChange is triggered, when user has done a slide. User can specify chart axis scaling in event for min and max values in bar chart.



Range slider in hours



Default Axis Scaling in minutes for Bar chart

## Range Slider Component properties

| Name                           | Type    | Description                                       |
|--------------------------------|---------|---|
| Step Labels                    | boolean | Display step numbers for the ticks on the slider  |
| First value                    | float   | Current value of the slider grip                  |
| Second value                   | float   | Current value of the second slider grip           |
| Change to vertical orientation | boolean | Orientation of slider                             |
| Maximum Value                  | float   | Maximal value of the slider                       |
| Minimum Value                  | float   | Minimal value of the slider                       |
| Small Step Width               | float   | The grip can only be moved in steps of this width |
| Total Units                    | int     | Number of units that are displayed by ticks       |