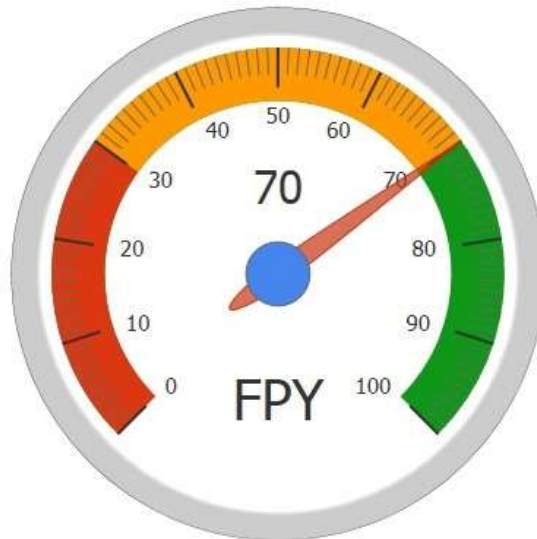


# ALPEIN Software SWISS AG

## Google Style Gauge for SAP Lumira Discovery (Lumira) Specification

Last revision: Aug 22, 2018



Document version 2.3  
22.08.2018

## Overview

Our Gauge component displays a single key measure (amount, percentage). It based on Google style gauge chart and uses to display various KPI values.

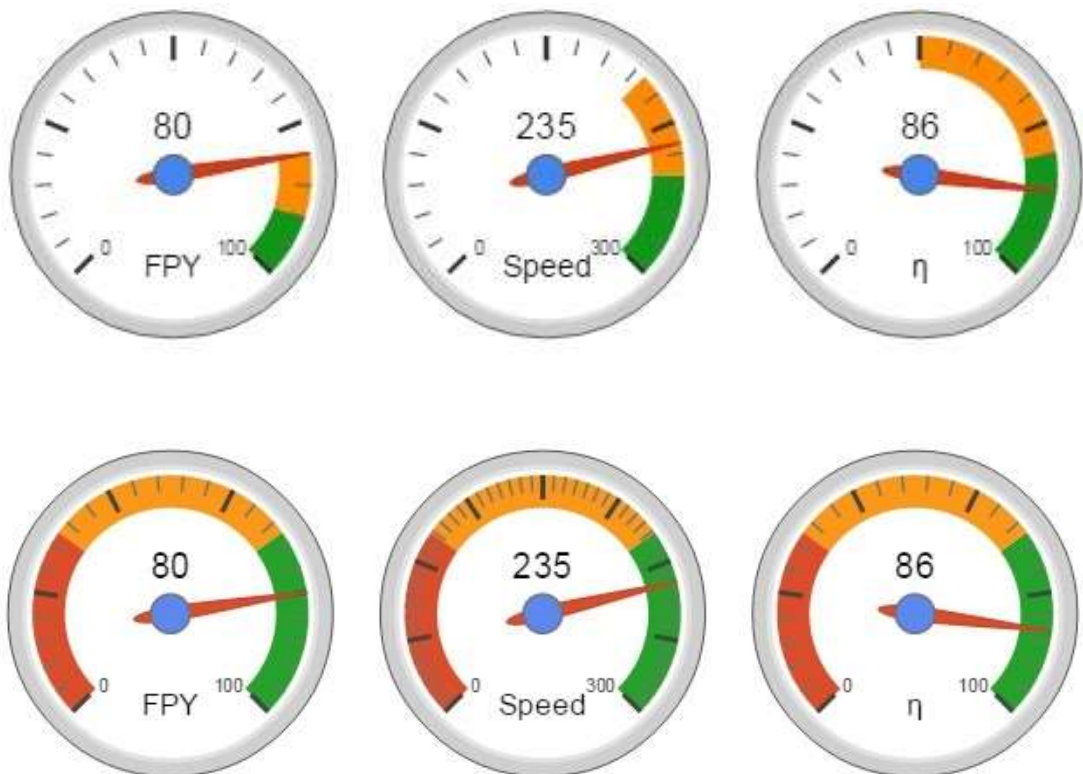
Gauge benefits:

- Responsive design
- Options for customizing
- Smooth Animation
- Data binding

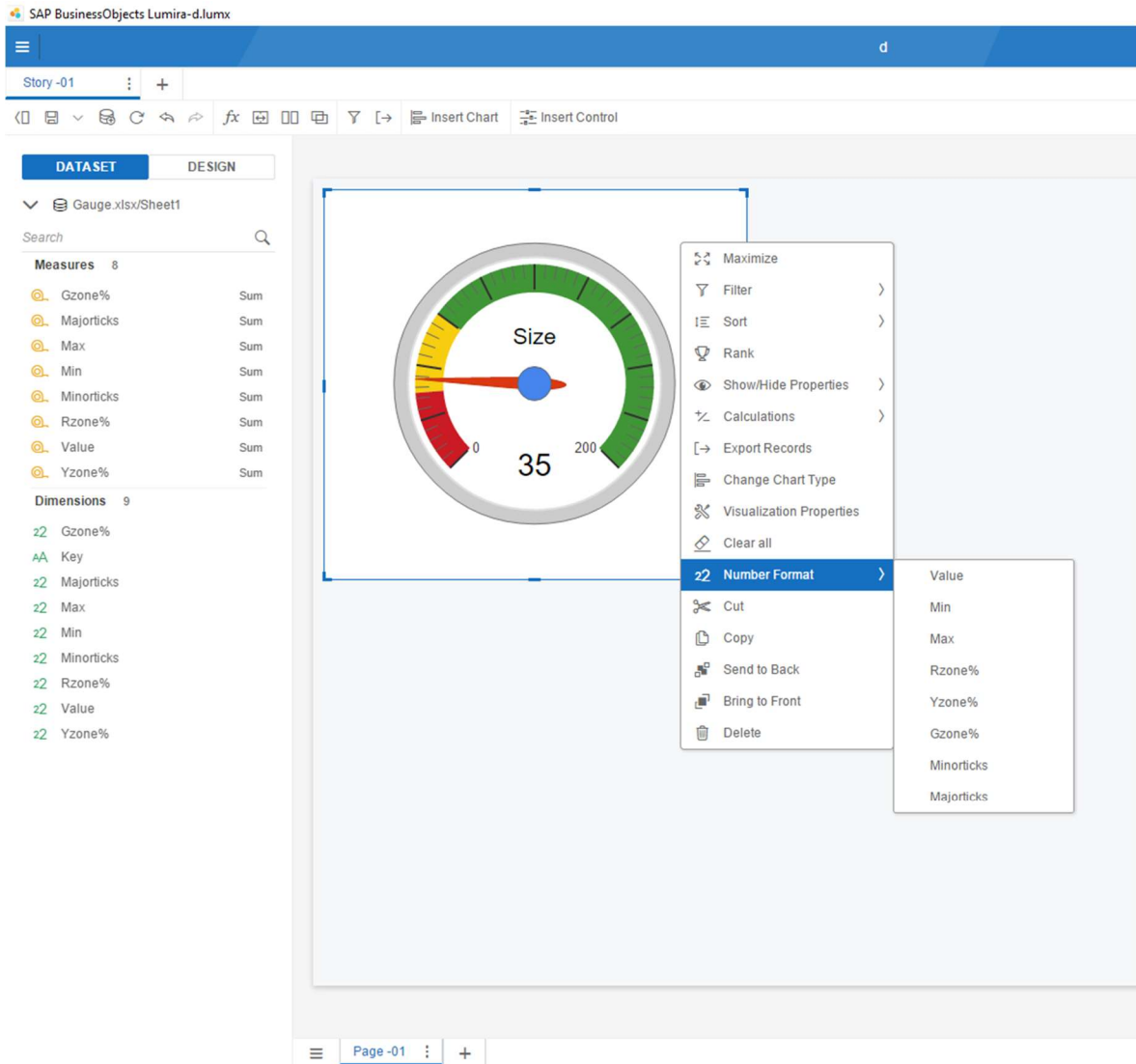
## Compatibility

- Lumira 1.31+ , Lumira 2.x
- Browsers – Chrome, IE, Opera, Mozilla

## Component Design Variation



# Design View



## Component Properties

Name	Type	Description
Key	Free text	Description on of gauge
Value	int	Value for indicator
Min	int	Min gauge value
Max	int	Max gauge value
BigTicks	int	Number of big ticks in gauge
SmallTicks	int	Number of small ticks in gauge
Rzone%	int	% of red zone*
Yzone%	int	% of yellow zone*
Gzone%	int	% of green zone*

\*  $Rzone\% + Yzone\% + Gzone\% = 100$